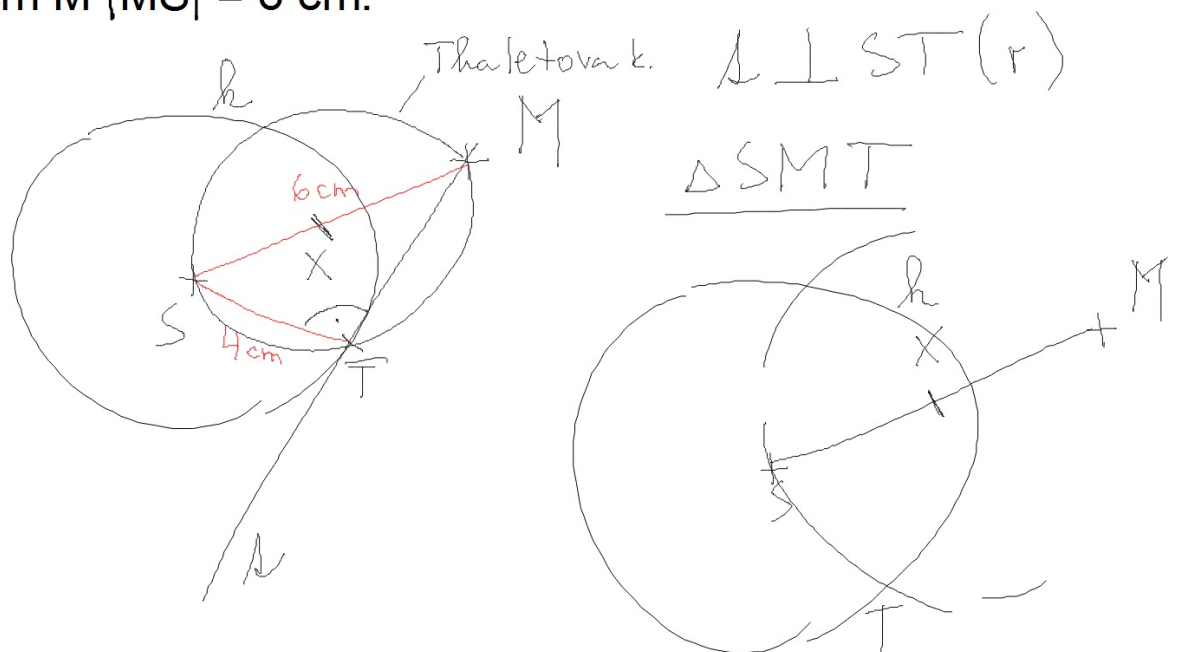
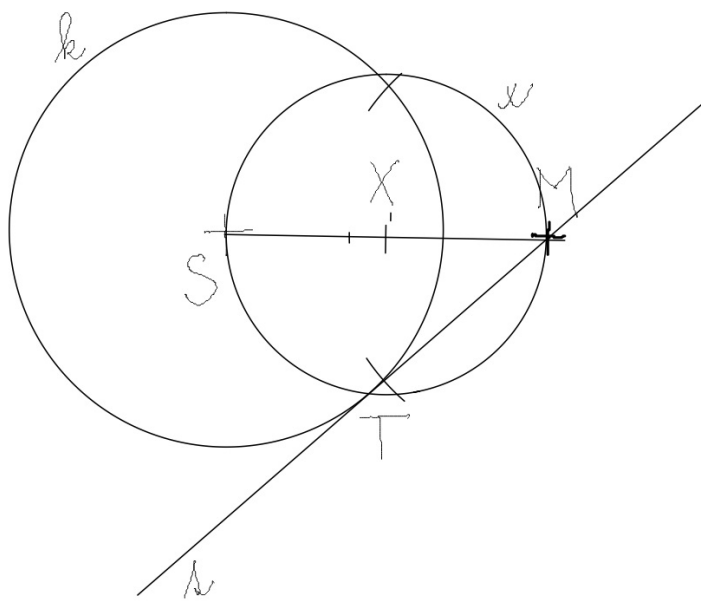


Užití:

Sestroj tečnu t ke kružnici $k(S; 4\text{ cm})$. Tečna prochází bodem M $|MS| = 6\text{ cm}$.

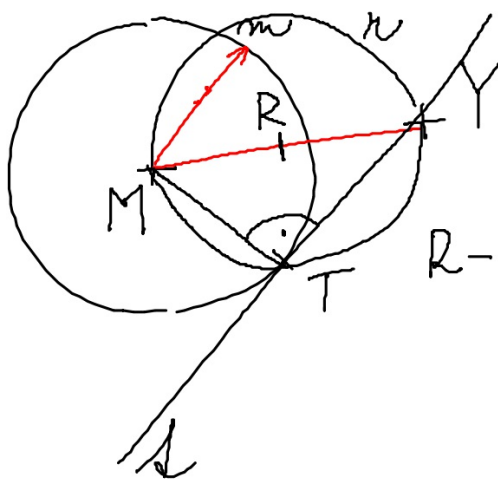




2 řešení

1. $k; k(S; 4\text{cm})$
2. $M; |MS| = 6\text{cm}$
3. $X; \underline{X - střed MS}$
 $\underline{X \in MS \wedge}$
 $\underline{|XS| = |XM|}$
4. $x; x(X; |XS|)$
5. $T; T \in k \cap x$
6. $l; M, T \in l$

Sestroj tečnu z bodu Y ke kružnici $m(M; 5\text{cm})$, $|MY| = 7\text{cm}$.



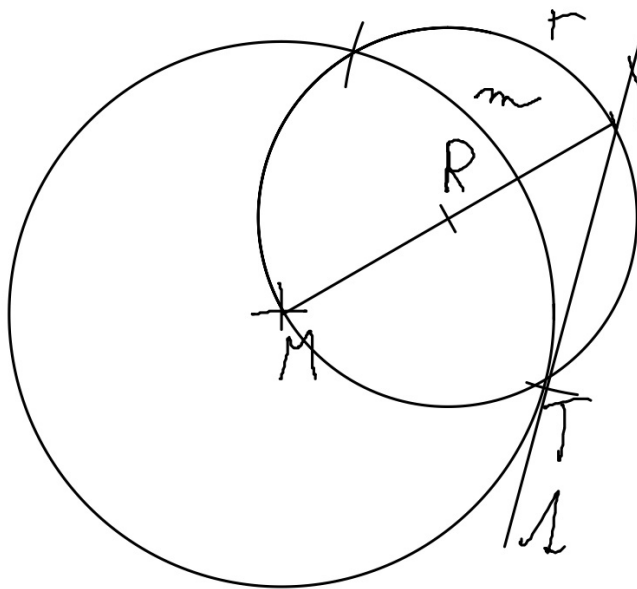
$m(M; 5\text{cm})$

$|MY| = 7\text{cm}$

R - střed MY

$\Rightarrow n(R; |RM|)$

$m(M; 5\text{ cm}) \quad |MY| = 7\text{ cm}$



1. $m, m(M; 5\text{ cm})$
2. $Y, |YM| = 7\text{ cm}$
3. $R, |RY| = |RM|$
 $R \in m(M; 5\text{ cm})$
4. $r, r(R; |RY|)$
5. $T, T \in r \cap m$
6. $l, T, Y \in l$