

46/9

$\triangle ABC: a = 3\text{cm}, b = 4\text{cm}, c = 5\text{cm}$

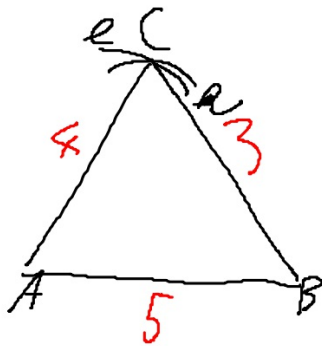
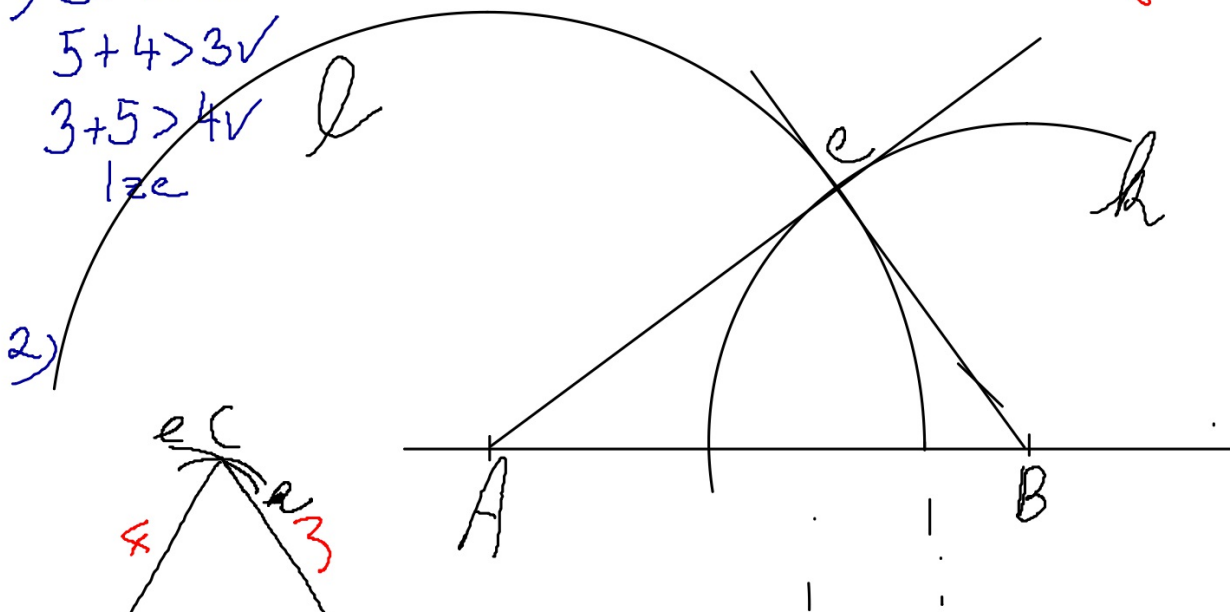
1) $3 + 4 > 5 \checkmark$

$5 + 4 > 3 \checkmark$

$3 + 5 > 4 \checkmark$

lze

Různostranný



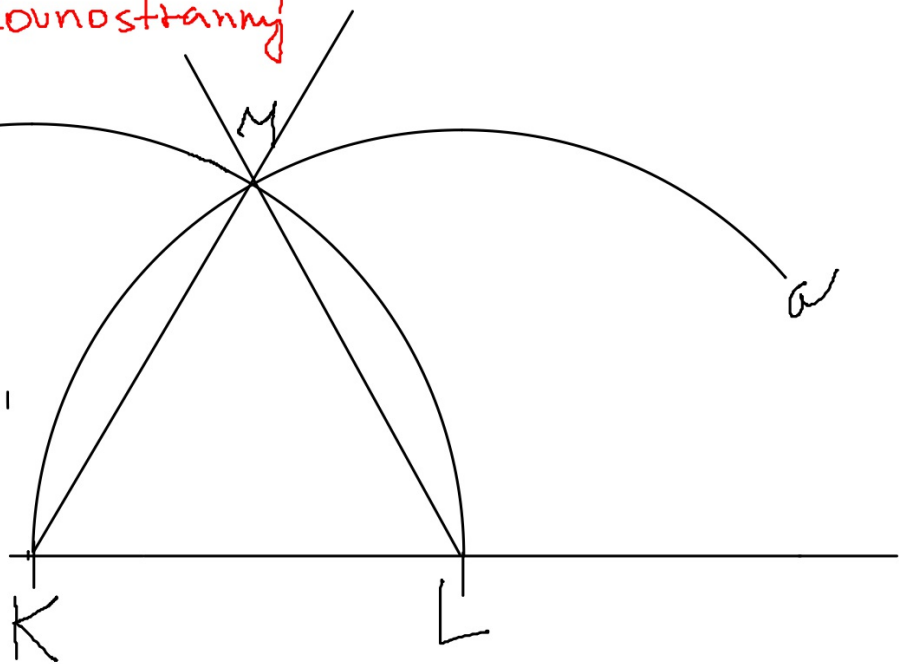
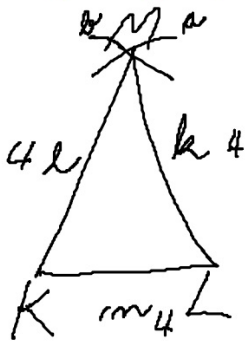
b) $\triangle KLM$: $k=4\text{cm}$, $l=4\text{cm}$, $m=4\text{cm}$

Rovnostranný

$$4+4 > 4 \checkmark$$

$$4+4 > 4 \checkmark$$

$$4+4 > 4 \checkmark$$



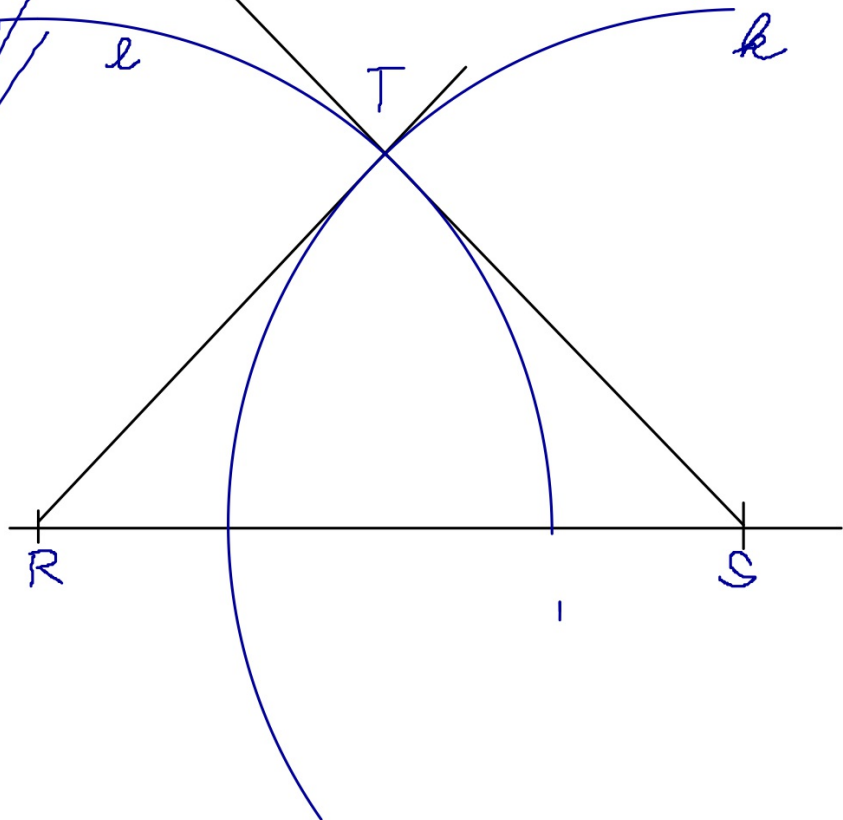
c) $\triangle RST$: $R = 48 \text{ mm}$, $S = 48 \text{ mm}$, $\angle = 65^\circ$

$$48 + 48 > 65 \checkmark$$

$$48 + 65 > 48 \checkmark$$

$$48 + 65 > 48 \checkmark$$

Ровноугольный



Při výsokání existují 2 řešení.
 $\triangle ABC_1: a = b = c = 6\text{cm}$

